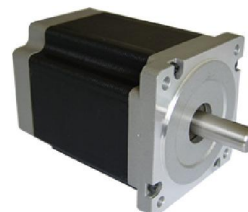


# HS3442 Two Phase 1.8° Stepper Motors

## ■ Features

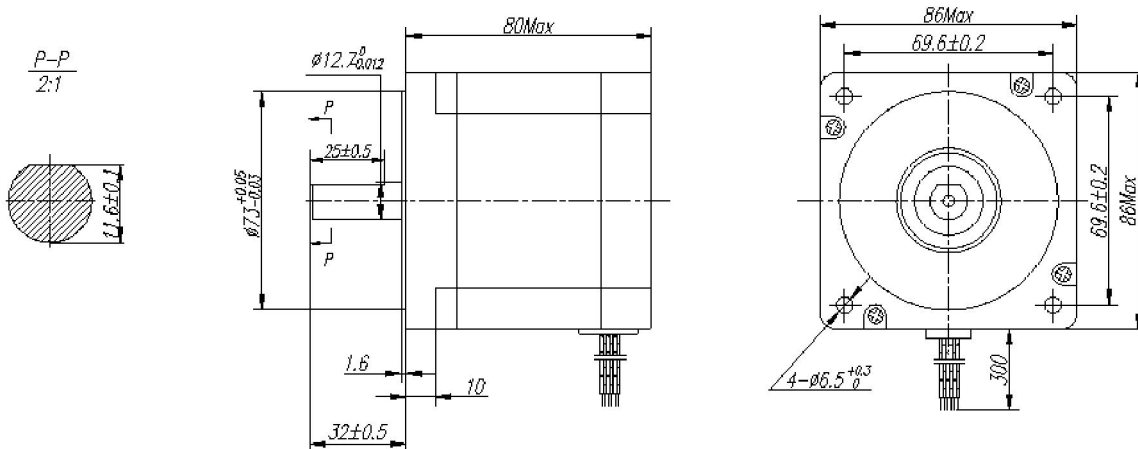
- 1.8° Stepping Angle
- NEMA 34
- High Torque
- High Accuracy
- Smooth Movement



## ■ Specification

Model	Connection	Holding Torque	Phase Current	Resistance	Inductance	Detention Torque	Rotor Inertia	Shaft Size	Lead Number	Length	Weight
		Oz-in (NM)	A	ohm	mH	Oz-in	oz-in-sec <sup>2</sup>	inch		inch	lb
HS3442	Bipolar Parallel		5.6	0.35	4.25	9.2	0.02186	0.5	8	3.15	4.86
	Bipolar Series		2.8	1.4	16.99						
	Unipolar		4.0	0.7	4.25						

## ■ Mechanical Dimension



## ■ Wiring Diagram

