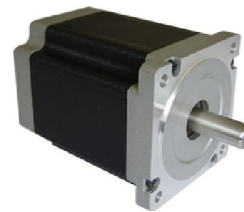


42HS20 Two Phase 1.8° Stepper Motors

■ Features

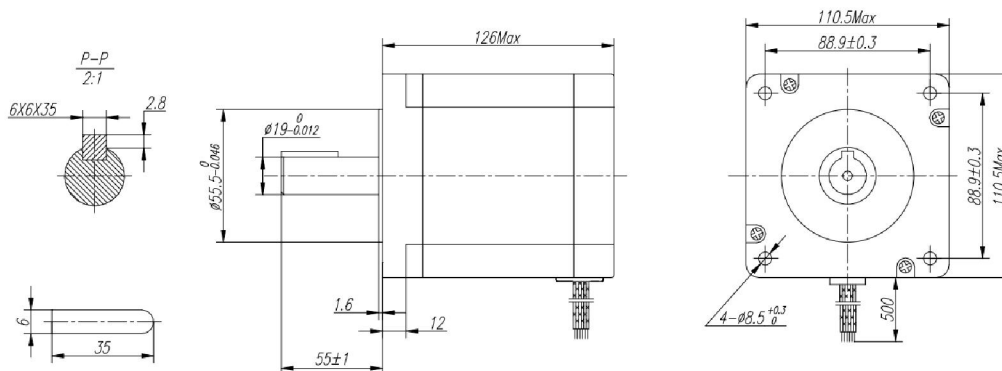
- 1.8° Stepping Angle
- NEMA 42
- High Accuracy
- Smooth Movement



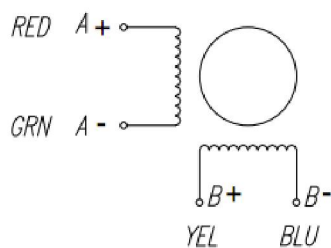
■ Specification

Model	Holding Torque	Rated Current	Resistance	Inductance	Voltage	Rotor Inertia	Shaft Size	Lead Number	Length	Weight
	Oz-in (NM)	A	Ohm	mH	V	oz-in-sec ²	inch		inch	lb
HS4220	2832 (20)	6.0	0.66	11	3.96	0.11985	0.75	4	4.96	14.8

■ Mechanical Dimension



■ Wiring Diagram



■ Speed-Torque Curve

