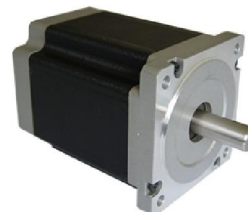


HS3468 Two Phase 1.8° Stepper Motors

■ Features

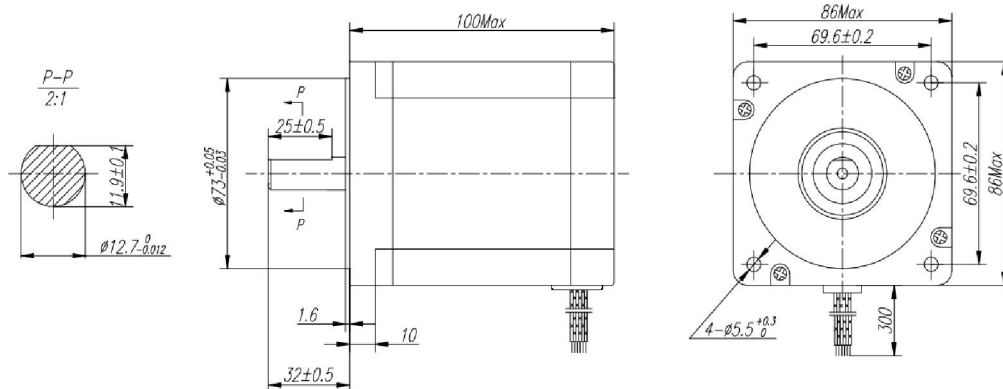
- 1.8° Stepping Angle
- NEMA 34
- High Torque
- High Accuracy
- Smooth Movement



■ Specification

Model	Connection	Holding Torque	Phase Current	Resistance	Inductance	Detention Torque	Rotor Inertia	Shaft Size	Lead Number	Length	Weight
		Oz-in (NM)	A	ohm	mH	Oz-in	oz-in-sec ²	inch		inch	lb
HS3468	Bipolar Parallel	971 (6.86)	5.6	0.45	4.1	13.45	0.02538	0.5	8	3.94	6.55
	Bipolar Series	971 (6.86)	2.8	1.8	16.4						
	Unipolar	694 (4.9)	4.0	0.9	4.1						

■ Mechanical Dimension



■ Wiring Diagram

